



INNOVA
Drilling & Intervention

INNOVA ENGINEERING INSTALLATION GUIDE

REV 1.1

Innova engineering is supplied as zipped installation file which must be unzipped before use. Right click on the file and select “Extract All...” From the context menu.

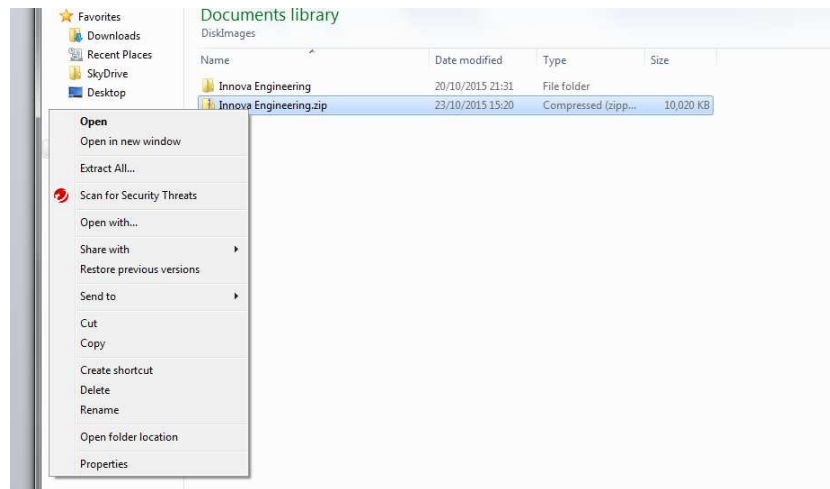


Figure 1: Extracting Install File

Select a location which you wish to extract the files to and click “Extract”. The installation files will be extracted to the selected location in a folder called “Innova Engineering”

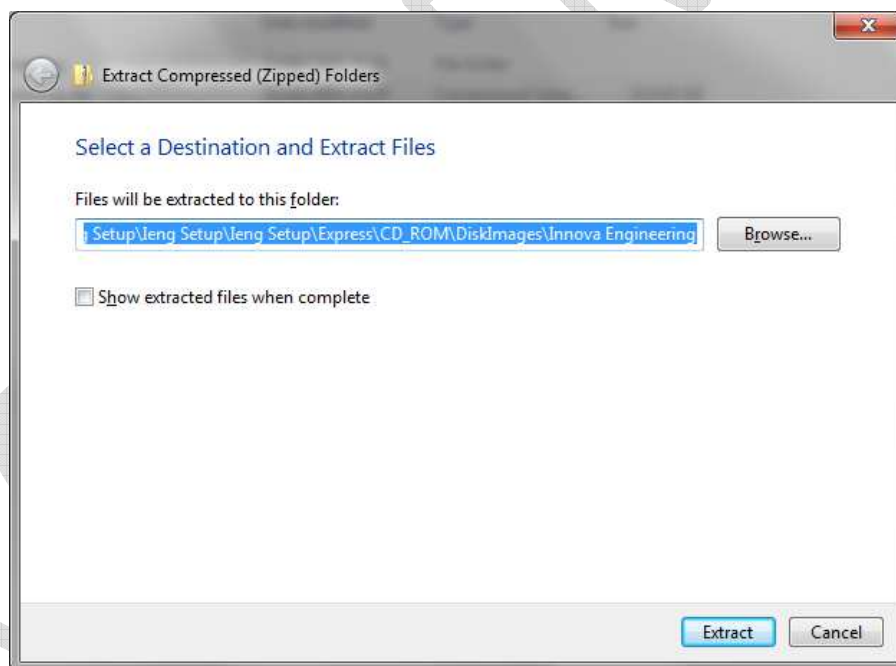


Figure 2: Extract installer location

Once the files have been extracted, open the Innova Engineering folder and double click on the “Innova Engineering vx.x.x.msi” file to begin the installation process. Click on the “Next” button to begin the installation.



Figure 3: Install page 1

The next dialog will present the license agreement, read and click the “I accept the terms in the license agreement” radio button and the click on the “Next” button.

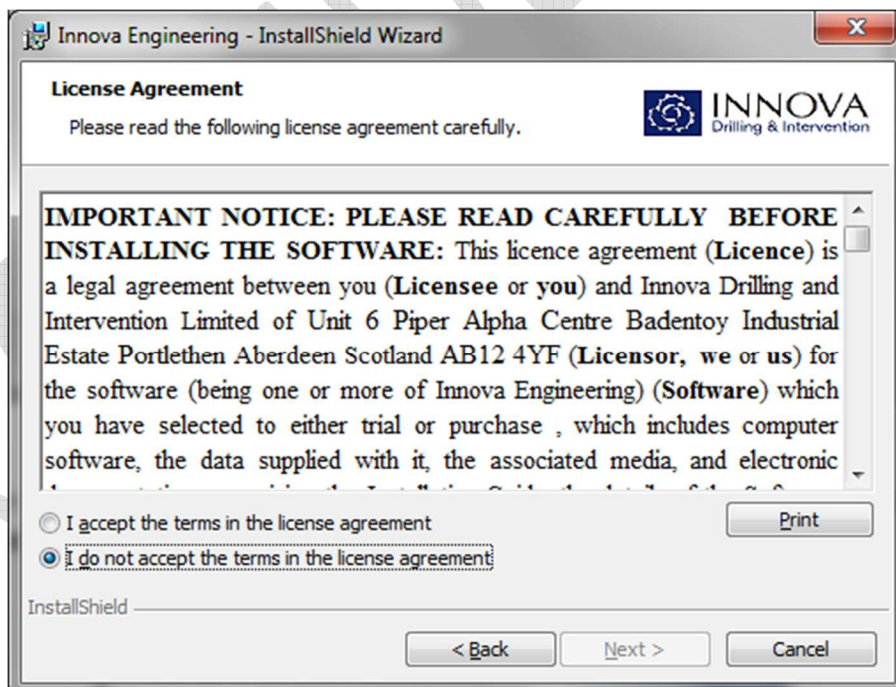


Figure 4: Install page 2 user license agreements

The next screen will allow you select the location which you wish to install Innova Engineering. The default location is “C:\Program Files (x86)\Innova Drilling and Intervention\Innova Engineering”. If you wish to change the location the program is installed to click on the change button.

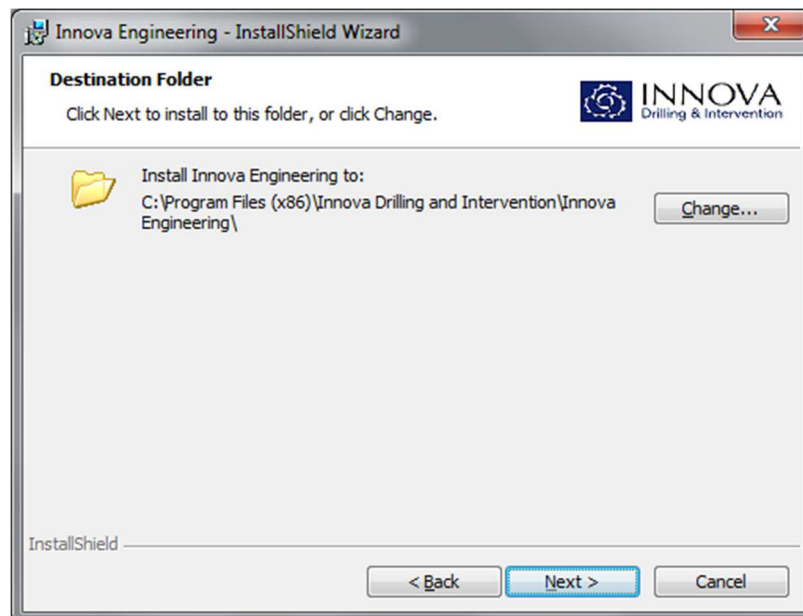


Figure 5: Install page 3 select program location

The final page will show the installation options selected, click “Install” to install the software with the displayed settings.

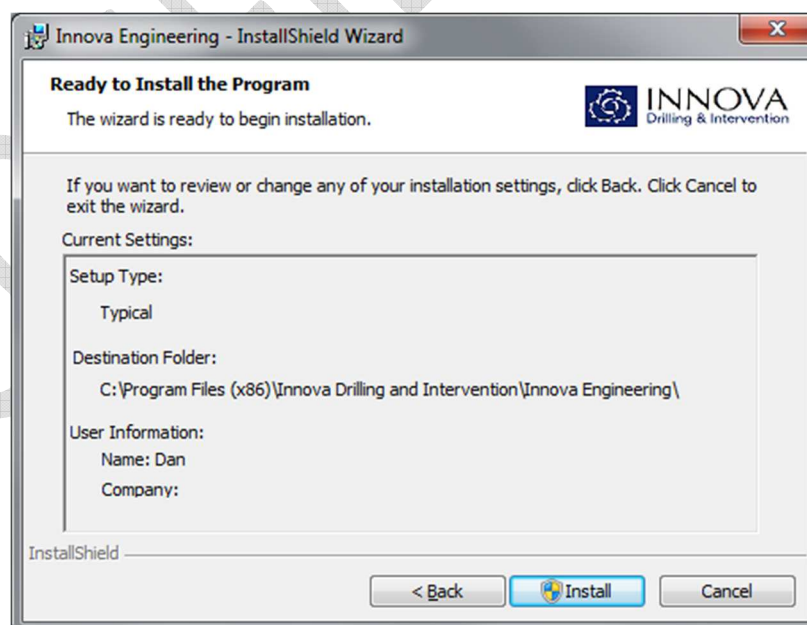


Figure 6: Install page 4 installation settings

If the copy of Innova Engineering is genuine the user will be presented with a dialog showing the publisher as “Innova Drilling & Intervention”. If not the software is not genuine and should not be used. Click “Yes” to continue the installation.

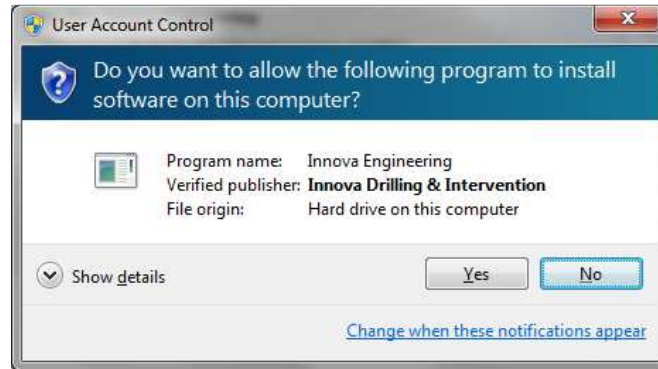


Figure 7: Genuine software certificate

Once the installation is complete an icon will have been added to the desktop and an entry for “Innova Drilling & Intervention” will be in the start menu.